

Daiwa Roynet Hotel NAHA-OMOROMACHI

A hotel that combines functionality
with a resort feel.
An ideal base for business or sightseeing
in Okinawa.

Omoromachi — newly reborn as “Naha Shin-toshin.”
Located on the top floor of the landmark Naha Shin-toshin
Center Building, Daiwa Roynet Hotel NAHA-OMOROMACHI
promises the very best in comfort for your stay
in Okinawa, whether your trip is for sightseeing or business.



ダイワロイネットホテル那覇おもろまち

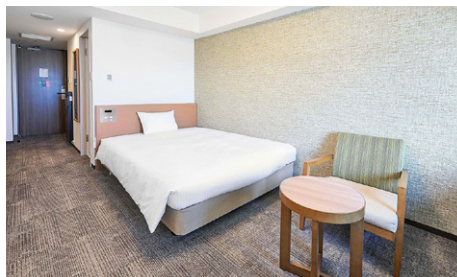




Deluxe Double Room (24m²)



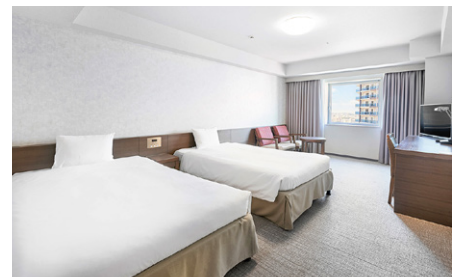
Deluxe Twin Room (40m²)



Standard Double Room (20m²)



Hollywood Twin Room (24m²)



Superior Twin Room (31m²)



Universal Twin Room (40m²)

(243 rooms in total)

Facilities and amenities

Wireless LAN (Wi-Fi standard) / VPN connectivity (all guest rooms have LAN cables)

Duvet / Liquid crystal display television set / Energy-saving system / Refrigerator (empty) / Air purifier / Hair dryer / Bidet-style toilet seat / Charger for mobile devices / Electric kettle / Free satellite channels / Hair shampoo / Hair rinse / Body soap / Face and hand soap / Fabric deodorizer / Shoehorn / Shoe polisher / Clothes brush / Hangers / Bath towel / Face towel / Bath mat / Nightwear / Slippers

* Please pick up tooth brush sets, hair brushes, razors, cotton swabs, body towels and others at the amenity bar on the front desk floor.

Facilities and services

Rental computer (JPY880 per night, including tax) / Copy and fax services (subject to fees)

Parcel delivery service / Microwave / Vending machine / Laundromat / Ice / Auto adjustment machine / AED / Evacuation chair / Wheelchair

Restaurants and stores

Lawson (1F) Open 24 hours

Sky Garden (18F restaurant) Breakfast – 6:30 a.m. to 9:30 p.m.



Breakfast (18F: Sky Garden)

While looking out over the city of Naha and the sea from the top floor of this 18-floor building, you can enjoy our buffet-style breakfast. This includes a large variety of both Japanese and Western seasonal food centered on local Okinawan food and Japanese cuisine.

6:30 a.m. to 9:30 a.m.

Adults (13 years and older): JPY1,800 (including tax) /

Children (from 6 to 12 years old): JPY900 (including tax) /

Infants (5 years old and younger): Free

Breakfast vouchers are sold at the front desk.

You can use the breakfast voucher only on the appointed date.

Local area guide (access from the hotel)

T GALLERIA Okinawa by DFS: About a 5-minute walk from the hotel

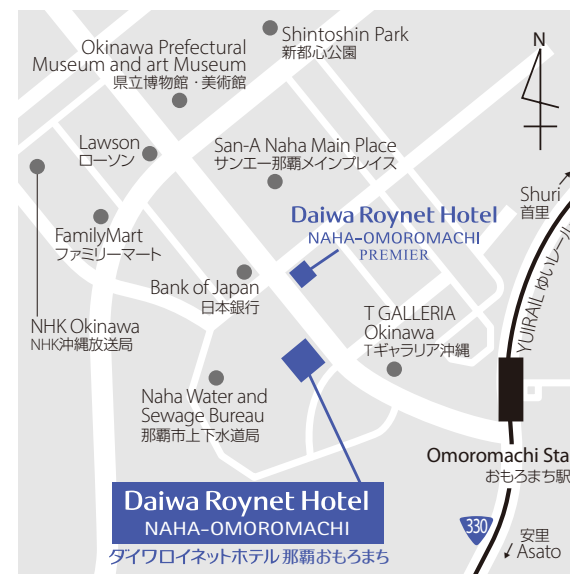
Tomarin (Tomari Wharf Terminal): About a 10-minute drive from the hotel

Okinawa Churaumi Aquarium: About a 2-hour drive from the hotel

Kokusaidori Street: About a 20-minute walk from the hotel / about 5 minutes by public transportation

Okinawa Convention Center (Ginowan Tropical Beach): About a 30-minute drive from the hotel

Shurijo Castle: About a 10-minute drive from the hotel



- 1) About a 5-minute walk from Omoromachi Station on YUI Rail (Okinawa Urban Monorail)
- 2) About a 20-minute ride from Naha Airport Station to Omoromachi Station by YUI Rail
- 3) About a 20-minute drive from Naha Airport

Hotel parking

Fee: JPY1,100 per night per car (including tax)

Capacity: 17 standard cars / 18 high-roof cars

* Available on arrival. We do not accept prior reservations. You can move your vehicle as you wish except for the period from 12:00 a.m. to 6:30 a.m.

Affiliated parking (Times 24)

Capacity: Daiichi Parking: 43 cars / Daini Parking: 21 cars

* Maximum JPY1,100 (including tax) overnight ticket is sold at the front desk. If you use the affiliated parking facility, please present the parking stub at the hotel's front desk.

Daiwa Roynet Hotel NAHA-OMOROMACHI

1-1-12 Omoromachi, Naha-shi, Okinawa 900-0006

Phone 098-862-4555 Fax 098-862-4556

<https://www.daiwaroynet.jp/naha-omoromachi/>